



Company Profile

Autec Service s.r.l.



Sede Operativa e Amministrativa:
Via C. Cenni 17 – 10095 Grugliasco (TO)
Tel. +39.011.403.71.12
Fax +39.011.403.91.06 – U.T. +39.011.403.41.35

Sede Legale:
C.so Francia 32
10143 Torino
email: autecservice@g8i.eu
P. IVA 08344840015
R.E.A. Torino 966135
Cap. Soc. € 99.000,00 i. v.



AUTEC SERVICE s.r.l.

AUTEC SERVICE s.r.l. was founded in 2001, mainly with the aim of carrying out the automation and maintenance of HVAC (Heat Ventilation Air Conditioning) systems.

Thanks to its previous experience in the fields of installation, automation and control of industrial plants, AUTEC SERVICE's management has increased the number of employees over the years and expanded the company's specialization into other sectors, such as: installation of MV and LV plants, electro-instrumental engineering, software, management and maintenance of civil and industrial technological plants.

So we are able to offer our experience like MEP Contractor.

Company Details

Here are the main details of the Company:

Name	AUTEC SERVICE
Legal Form	Limited Liability Company
Registered Office	Corso Francia, 32 - Turin
Operating Office	Via Camillo Cenni 17 - 10095 Grugliasco
Telephone and Fax	+39 011.4037112 - +39 011.4039106
E-Mail	autecservice@g8i.eu

Italian Branch

Lombardy	Via Caldera 21 - 20153 Milano
Sardinia	Via Monserrato SN - 09028 Sestu (CA)

Company Business Details

Reg. at the Chamber of Commerce	Turin
VAT Number	08344840015
Economic Administrative Index	Turin no. 966135
Companies Registry	Turin

Staff

At present, AUTEC SERVICE has a staff of 70 employees, subdivided into technical designers, installers and maintenance workers.

Turnover

2008	6.735.000	Autec Service + Atlasys
2009	7.044.000	Autec Service + Atlasys
2010	7.560.000	Autec Service + Atlasys
2011	8.000.000	Autec Service
2012	10.035.000	Autec Service
2013	10.550.000	Autec Service
2014	12.000.000	Autec Service



ISCRIZIONI E CERTIFICAZIONI

Professional and technical qualifications as per italian law no. 37/08

Letter A: production, transportation and power distribution plants

Letter B: electronic radio and television systems in general, and atmospheric discharge protection systems

Letter C: heating and air conditioning systems

Letter D: water and sanitary systems

Letter E: gas transportation and usage plants

Letter G: fire protection systems

Compliance to quality requirements according to iso regulations

Certificate of compliance to Uni En Iso 9001:2000 no. 5856 A regulation

Soa accreditation

BENTLEY SOA Accreditation no. 7560/35/00

Categoria OG1
Categoria OG9
Categoria OG11
Categoria OS28
Categoria OS30
Categoria OS3
Categoria OG10

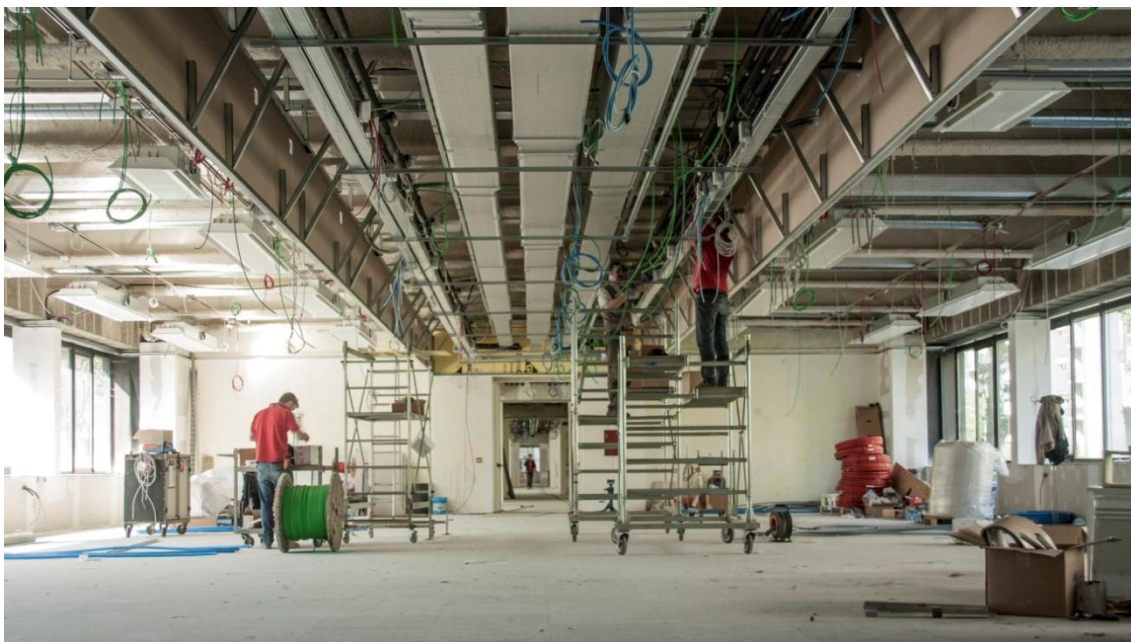
Class IIIBis
Class IIIBis
Class IVBis
Class IIIBis
Class IVBis
Class I
Class IV



SERVIZI PROPOSTI

General-Contractor

Having reached a good position in the SOA category classifications, over the last few years Autec Service has started to carry out more complex projects including building work, plant installation and internal furnishing of industrial, business and office complexes. These activities are coordinated only by Autec Service's personnel, whereas some less important or more specialized activities related to the production of machines or furniture are assigned to trustworthy subcontractors.



Engineering and planning of systems and plants

AUTEC SERVICE's engineering is structured to carry out studies and planning in the following industrial fields:

- Medium and Low Voltage power distribution;
- Automation and control of PLC-controlled industrial plants;
- Automation of thermo-ventilation and air conditioning systems;
- Design of measurement systems and control of industrial processes;
 - * measurements of physical quantities: capacities, temperatures, levels, pressures, etc.;
 - * measurements of chemical quantities: pH, redox, fluid conductivity, etc.;
 - * gas analysis: calculation of CO, CO₂ and O₂ contents in the fumes discharged by central heating plants and thermal treatment ovens;
- Optimization of combustion processes in industrial central heating plants;
- Drawing with CAD /SPAC systems (layouts and electrical diagrams);
- Software programming for graphical supervisory systems.

Global-service

One of AUTECH SERVICE's peculiar characteristics is that it can offer a real "Multi-service" contract. Our company can take care of all technological systems, from the main central heating plant to the last peripheral utility.

In fact, the coordination of maintenance services, the high internal costs for the management and control of those services and the control of their quality standards can create big problems in every company.

This "Multi-service" contract provides for great operating flexibility and economical management, and allows:

- Optimization of the use of direct and indirect labour;
- A relationship with one single partner;
- Reduction of intervention times;
- Avoidance of competence conflicts;
- Reduction of management costs.

All this results in real savings for the customer, management consistency and continuity, as well as quality assurance, without having to manage many different contractual relationships. On the contrary, the wider the range of services, the bigger the success of the tertiarization project.

Routine maintenance and plant management

Execution of all activities that allow provision of the services planned for the various plants while carrying out, besides routine maintenance operations such as fixings, regulation systems control, fume analysis and inspection of measuring devices, also on-site assistance and management operations.

Moreover, AUTECH SERVICE assumes the legal position of "Third Responsible" in the management of heating plants to guarantee the plant safety in compliance with existing laws.

Preventive periodic maintenance

The periodic actions either indicated in the producer's documentation or carried out on the basis of a long practice and experience in the maintenance field allow to prevent faults and disservices by maintaining ideal operating conditions.

Availability during the night and/or on non-working days

The emergency service is provided outside of normal working hours. Our specialized technicians can work on plants to fix sudden and unexpected faults.

Extraordinary and/or corrective maintenance

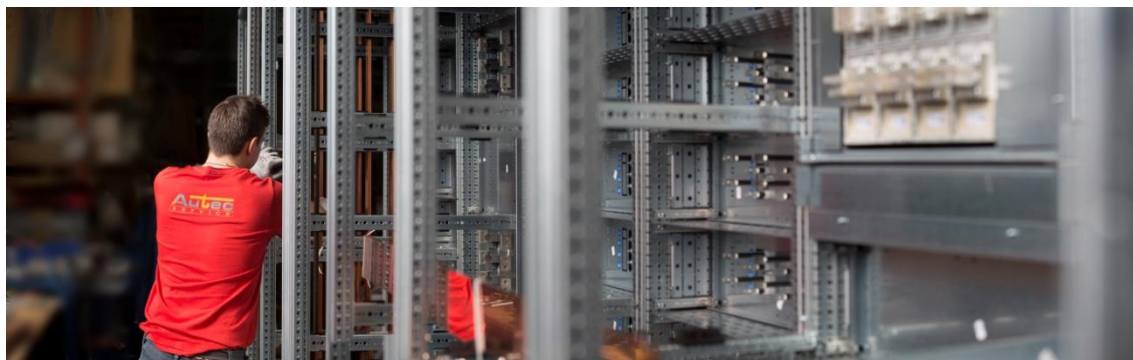
Services and/or supplies made to fix or replace equipment and corresponding changes to the plants.



Electrical board construction

AUTEC SERVICE s.r.l. takes care of all the supplies and services for the construction of different type of electrical board:

- Medium and Low Voltage power distribution board
- Board for the control and regulation of industrial process
- Board for command and automation
- Board for production and assembly lines



Plant assembly and installation

AUTEC SERVICE's staff of installers and assemblers can operate in different fields related to industrial plants:

- Development of cable ducts with galvanized raceways and/or conduit pipes;
- Installation and connection of auxiliary, shielded and special Medium and Low Voltage power cables;
- Development of onboard systems for production and assembly lines for mechanical components in the automotive and tertiary fields;
- Development of thermo-ventilation and air conditioning systems in business centres (banks, data processing centres, etc.);
- Development of primary lines in stainless steel tubes;
- Design and installation of photovoltaic systems.

Coordination

In AUTEC SERVICE there is an office with 6 order coordinators, who can organize the operation of technical and specialized personnel and plan the maintenance, thus ensuring improved preservation of customers' plants as well as giving remarkable savings in terms of energy and management.

The services offered by AUTEC SERVICE are designed each time according to the customer's needs.



REFERENCES

- unicredit bank
- reale mutua insurance
- ceva logistics
- poste italiane
- lingotto convention hall
- data center- uniced
- turin's regio theatre
- Cinema's museum - mole antonelliana
- gam - modern art gallery
- palazzo madama
- pinacoteca giovanni e marella agnelli
- lingotto - mall
- aem - electrical civic supplier
- johnson control
- telecom italia
- barilla
- ftp - fiat power train
- reggia di venaria
- turin's polytechnic school
- iveco
- iren
- wind
- siemens
- abb
- schneider
- ibm
- Italgas
- city of collegno
- city of beinasco
- city of moncalieri
- cofely
- ilmed



Organizational Chart

